



System SPO

(Roller Blind System)

SPO

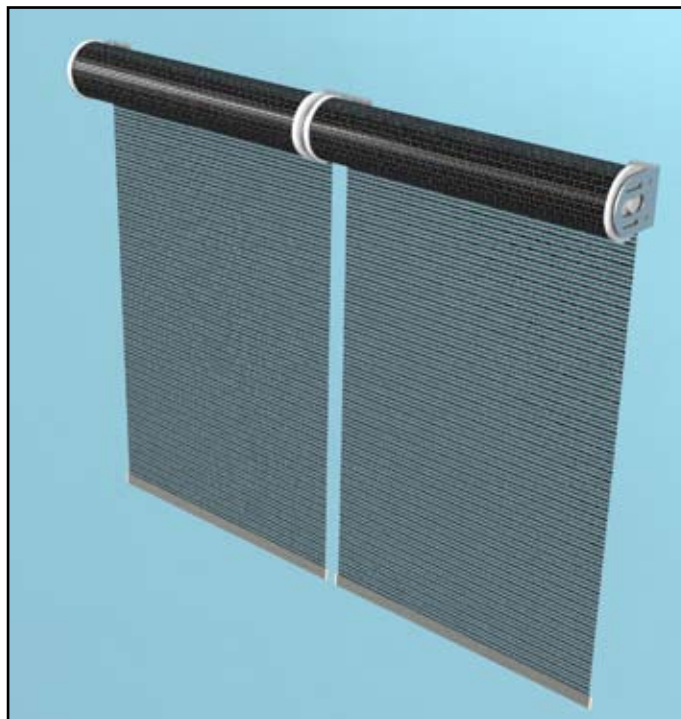
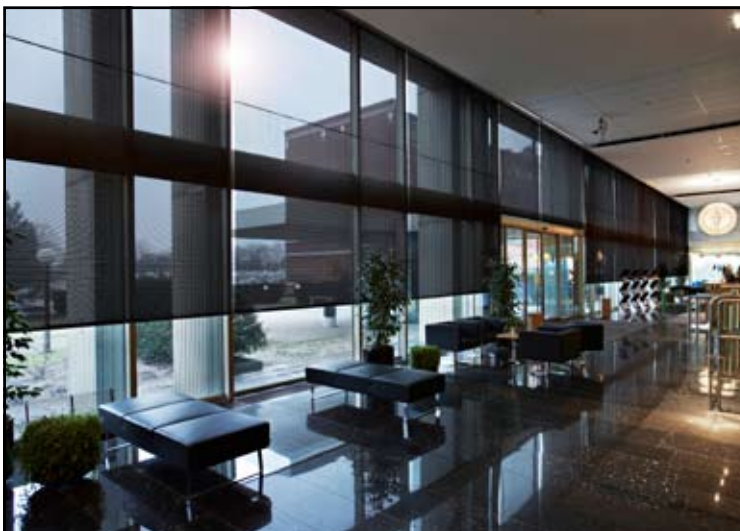
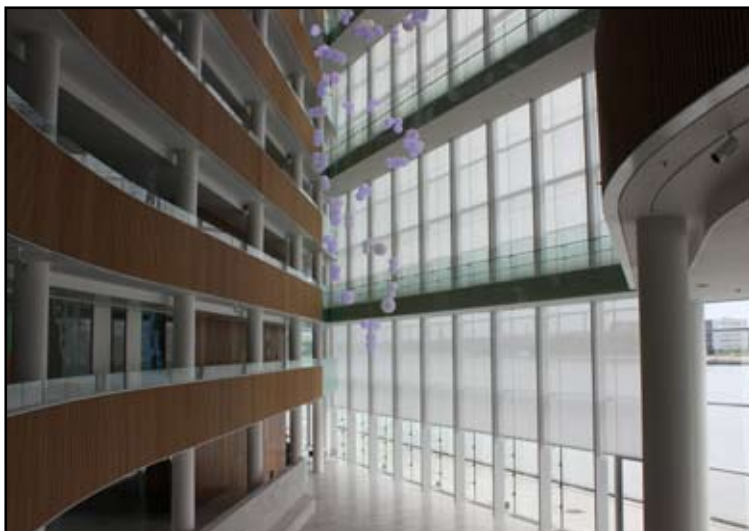
Traditional roller blind, to hang free or with line attached, for sunshade or to darken the room. Can be linked in sequence via sealed bearings for silent and reliable functioning. The use of these bearings enables series of large fabrics to be controlled by a single motor.

Coverage about 25–30m² per fabric, which in turn can be run in series. Blind has a depth of max 8000mm and breadth of max 5000mm giving large coverage for each one.

Advantages:

Sealed bearings run quietly and surely with no loss of function when connected together. A weighted batten fits in a pocket of the fabric. Size and construction are matched to fit the needs of each project.

WIDE
SYSTEMS AB



Materials:

Roller with snap fastening for fabric, in aluminium or steel, 45–150mm. Adjustable fastening in stainless steel or lacquered in RAL or NSC colour codes.

Fabric quality as required. Note that fabric material must be shape retentive.

Control:

Manual operation by chain or winch. Motor with push-button control or automatic control set to e.g. daylight or time.

Remote control 868.3 Mhz. EIB, LON, KNX etc.

WIDE
SYSTEMS AB

Wide Systems AB
Kavlanda 137
S-451 96 Uddevalla
+46 (0)76 130 66 66